

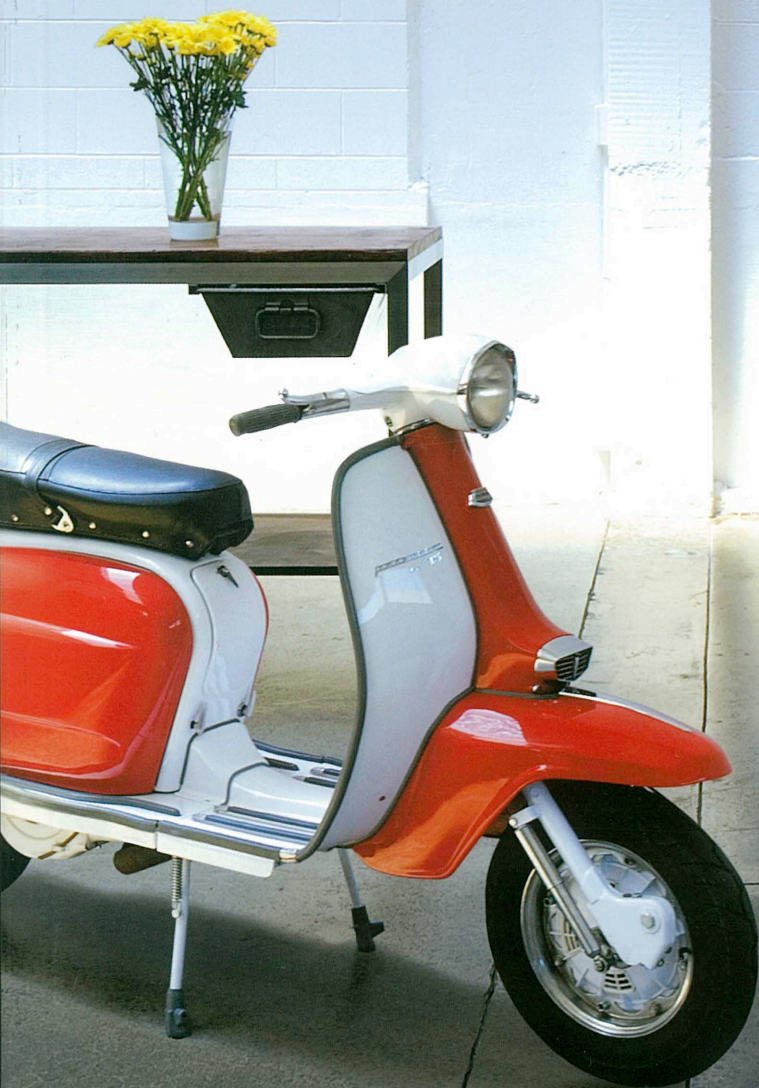
urbis

ISSUE 55
NEW ZEALAND
\$9.90
AUSTRALIA
\$12.95

DESIGN / LIVING / ARCHITECTURE

CITY *slickers*

big ideas for small spaces

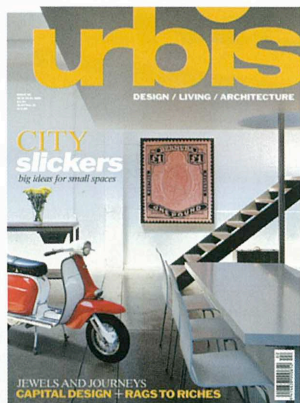


JEWELS AND JOURNEYS
CAPITAL DESIGN + RAGS TO RICHES

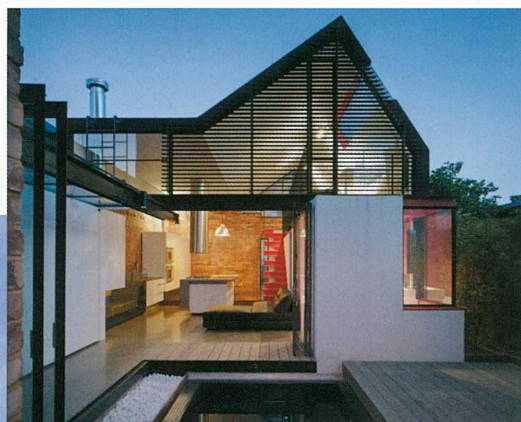


55 CITY slickers

big ideas for small spaces



ON THE COVER:
Urban apartment
designed by Glamuzina
Paterson. Photograph
by Emily Andrews.



- 12 DESIGN NEWS FROM HERE AND ABROAD
NEWSWORTHY
- 17 THE LATEST FURNITURE, PRODUCTS, AND GADGETS
DISPATCH
- 26 MONOLITHIC BLOCKS IN A NEW SPANISH BUILDING
STONE COLD
- 28 GRAPHIC DESIGN GETS A SCRUB UP
MAKING A SPLASH
- 30 DESIGN STUDIO WE LOVE INC TALKS TO URBIS
SHOWING YOU THE LOVE
- 32 NEW ZEALAND-DESIGNED SNEAKERS LAUNCHED
HI-TOP FANCY
- 34 PIPPA BLAKE EXHIBITS HER PAINTINGS IN AUCKLAND
JOURNEY WOMAN
- 40 AUCKLAND'S MARITIME MUSEUM EXTENSION
PLAIN SAILING
- 44 MOAD GIVES OLD OBJECTS NEW LIFE
VINTAGE WEARS
- 46 A NEW URBAN ART GALLERY
NICE RACK
- 48 UPCYCLING: RECYCLING, ONLY BETTER, GETS DESIGNER TREATMENT
RAGS TO RICHES

Nice Rack



Auckland architect José Gutierrez designs a boutique gallery.

WHEN AUCKLAND'S FERNER GALLERIES decided to downsize its operation last year, owner Helene Phillips used the opportunity to create a different type of dealer gallery. First, the location changed when the gallery swapped genteel Parnell for the up-and-coming light industrial environs of the Victoria Quarter.

The new gallery also changed its agenda to provide a boutique, by-appointment-only service for its clients, allowing it to operate out of a smaller shop front – its former storage space on Sale Street, in an anonymous row of 1980s units characterised by double-height ceiling studs.

"There were limitations on what could be done with the frontage, as the body corp wanted it to remain as it is," says architect José Gutierrez. Having worked on high-profile projects in the UK, including the

behind-the-scenes areas at Tate Modern, the Body & Soul charity HQ (housed in a beautiful heritage building in the East End) and various residential terrace houses, Gutierrez was no stranger to working with unusual or small spaces.

The largest structural change was the introduction of a mezzanine level containing living quarters, which Phillips (who lives in Taupo) can treat as an urban pied-à-terre, entertaining clients and artists around the large dining table.

Designing and building a large moveable rack for the paintings freed up floor space and allowed a large number to be on display at a time. As it's not a solid screen, paintings hang in a series of layers that can be moved at will, creating an interesting dialogue between artworks. "It's a sculptural feature in its own right," says Gutierrez. **Sam Eichblatt**